



Bruce Whitelaw

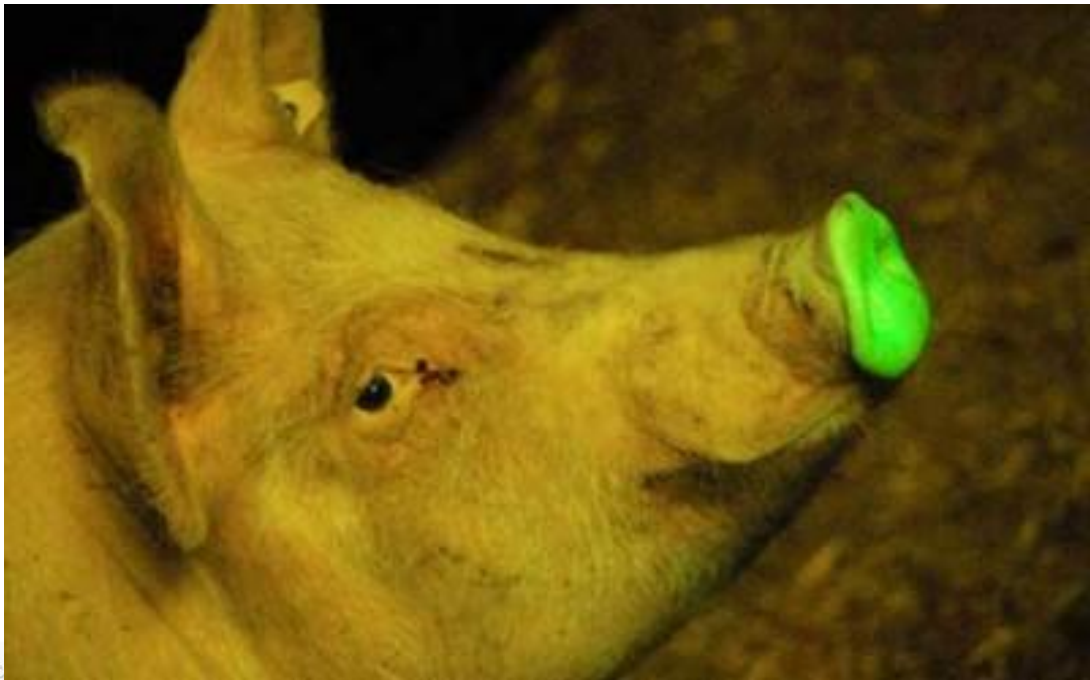
**Prof Animal Biotechnology
University of Edinburgh**

***GE animals in research :
non-murine models***



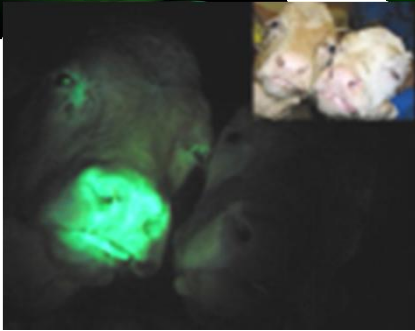
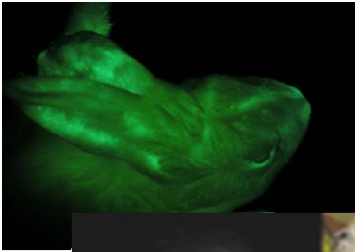
Society of Biology / Animals in Science Regulation Unit, Home Office, 7th December 2012

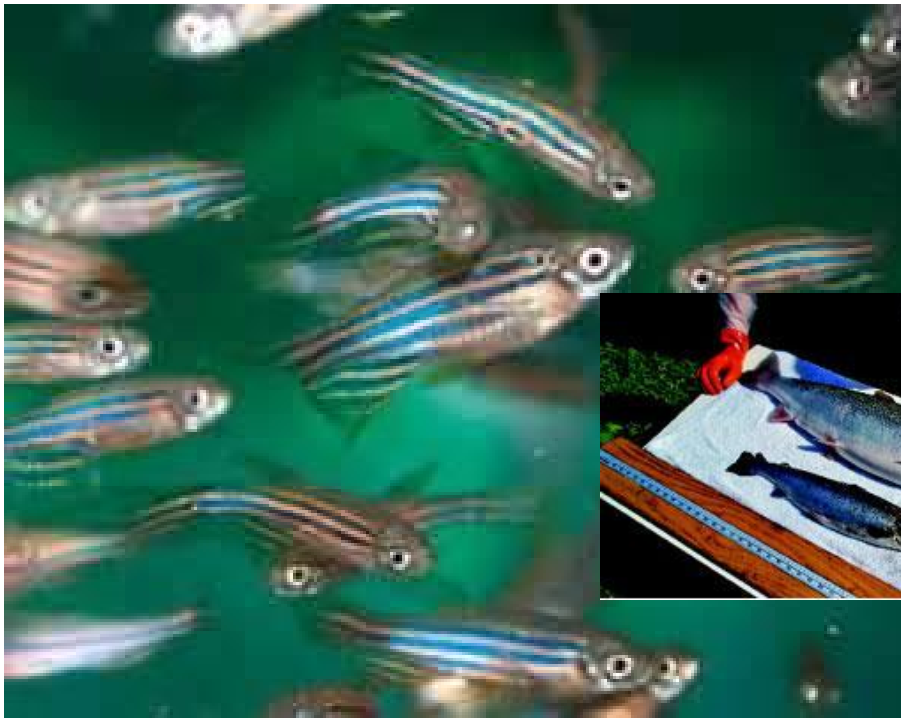






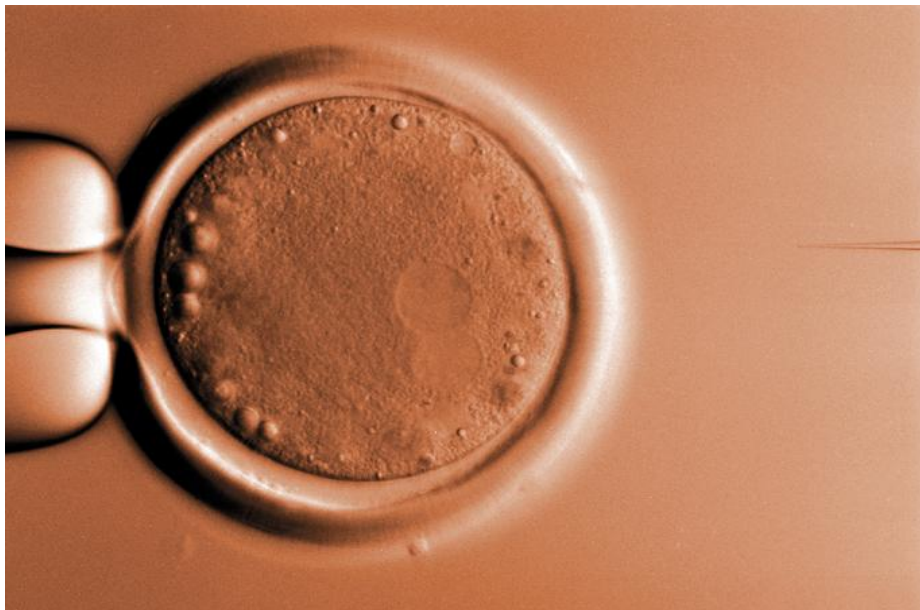
ROSLIN



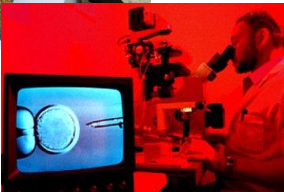
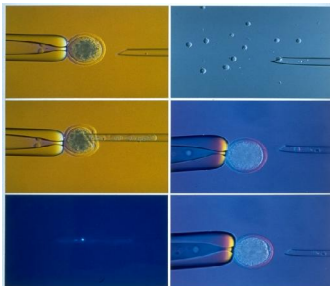




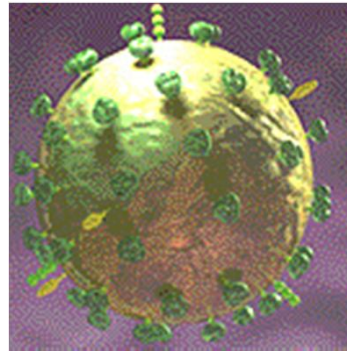
The technology



ROSLIN

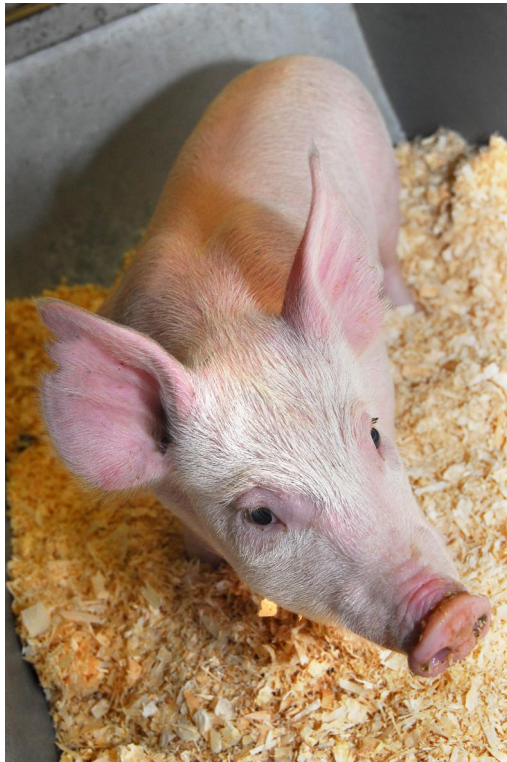


robust and efficient



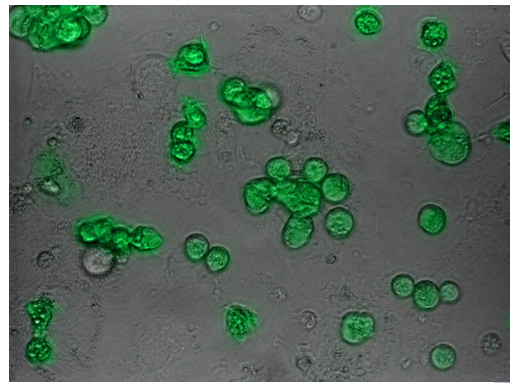
precise and easy





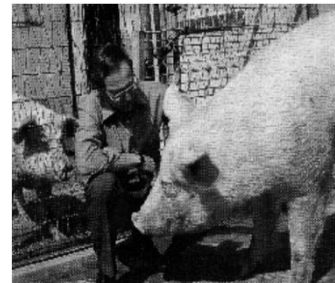


Helen Sang (Roslin)





1980s



Agriculture

vs

Biotech / Biomed



Agriculture

vs

Biotech / Biomed





2009 - FDA issue "Guidance for industry: Regulation of genetically engineered animals containing heritable Recombinant DNA Constructs"

2009 - Biotechnology Industry Organization (BIO) publishes GE Animal Stewardship

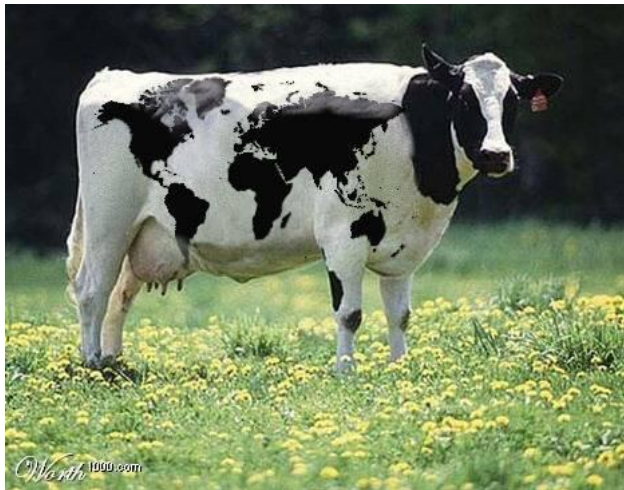
2010 - FDA public presentation on "Assessment for AquAdvantage® Salmon"



2010 - Eurobarometer – support for biotech returned to 1993 level

2011 - EFSA publishes "Defining environmental risk assessment criteria for GMO mammals and birds to be placed on the EU market"





Basic Science

Biotechnology

- bioreactors – antibodies
- xenotransplantation

Biomedicine

- preclinical models

Agriculture

- food security agenda

Animal Breeding

- disease resistance



Rodents

vs

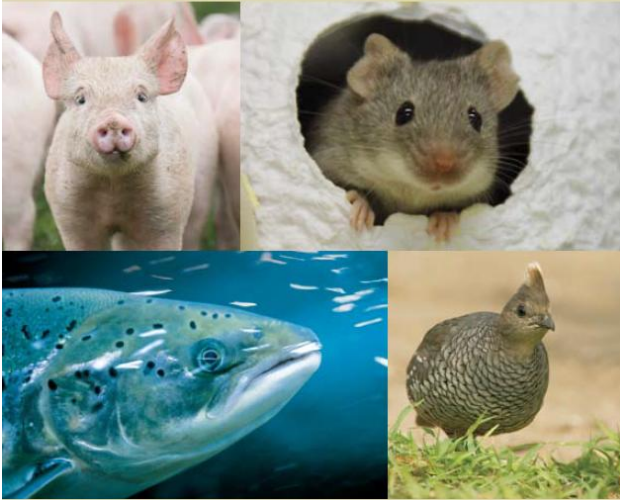
Livestock

Radio 5 - Victoria Derbyshire
MRC facility
"50,000 mice, with
several '000 culled each week"



GA passports:

The key to consistent animal care



1. health records
2. weight
3. feed
4. comments

